


Geo-Tagging User Guide

Introduction

The geo-tagging application adds latitude and longitude information recorded by the Active 10 to pictures which you have taken with your digital camera. You can then share your geo-tagged pictures with family and friends on social networking sites or you can build your own library which shows where in the world each picture was taken.

Before Your Trip

- 1) Make sure that the date and time on your digital camera matches your current local date and time. [If you forget to correctly adjust the date, your photos cannot be geo-tagged.] However, you do not need to worry if the time is not correctly set as explained in “After Your Trip”.
- 2) Set the current time on the Active 10 to the current local time. To set the time on your Active 10:
 - a. Go to the Main Menu
 - b. Press the Settings button
 - c. Scroll down to and select Time Offset. The Active 10 always displays UTC time as you will have noticed on the GPS Status page. The UTC time is the same as GMT. Choose the proper offset, e.g., if you are in UK during summer time you have to choose Plus 1 hour.
 - d. To view the local time on your Active 10 you have to set one of your Data Boxes to Time Now as follows:
 - i. Go to the Main Menu
 - ii. Press the Settings button
 - iii. Scroll down to and select 2 Data Box Layout
 - iv. Use the joystick to change the value of the Choose Data for Left Box until you find Time Now.
 - v. Once you have found Time Now, Press the Done button
 - vi. Press the Map button
 - vii. Press the Data Box Overlay to display the 2 Data Box Layout. You should see Time Now in the left data box.
- 3) Go to the Trip Log on your Active 10 and press the Start button if it is showing. [If you do not start the trip log, your trip data will not be logged, therefore your photos cannot be geo-tagged.] Once the trip log has been activated, the start button on the Trip Log becomes the stop button

and if you have software version 1.4, you will see this symbol  next the battery symbol on the top right hand corner of the Active 10. The triangle is only filled with a green color if you have a satellite lock.

- 4) You are now ready to start your trip.

During Your Trip

Take as many photos as you wish during your trip. To guarantee great geo-tagging results, ensure that you are in areas with a strong satellite lock as you take the photos.

After Your Trip

- 1) Once you finish your trip, press the stop button on the Trip Log. [Do not reset your trip data. If you wish to reset your data, you first need to save it by selecting Convert Trail to Track from the Trip Log Menu. You can then reset your data, if necessary, before going on another trip and geo-tag your photos at a more convenient time in the future.]
- 2) Upload the photos from your digital camera to a folder on your computer. Export your trip data in the form of Raw GPX file(s) to your computer and make sure you copy it to your photo folder.
- 3) Launch the GeoTagging application either by double clicking on the “Geo-Tag Photos” icon on your desktop or from SatSYNC->Tools->Geo-tag Photos menu.

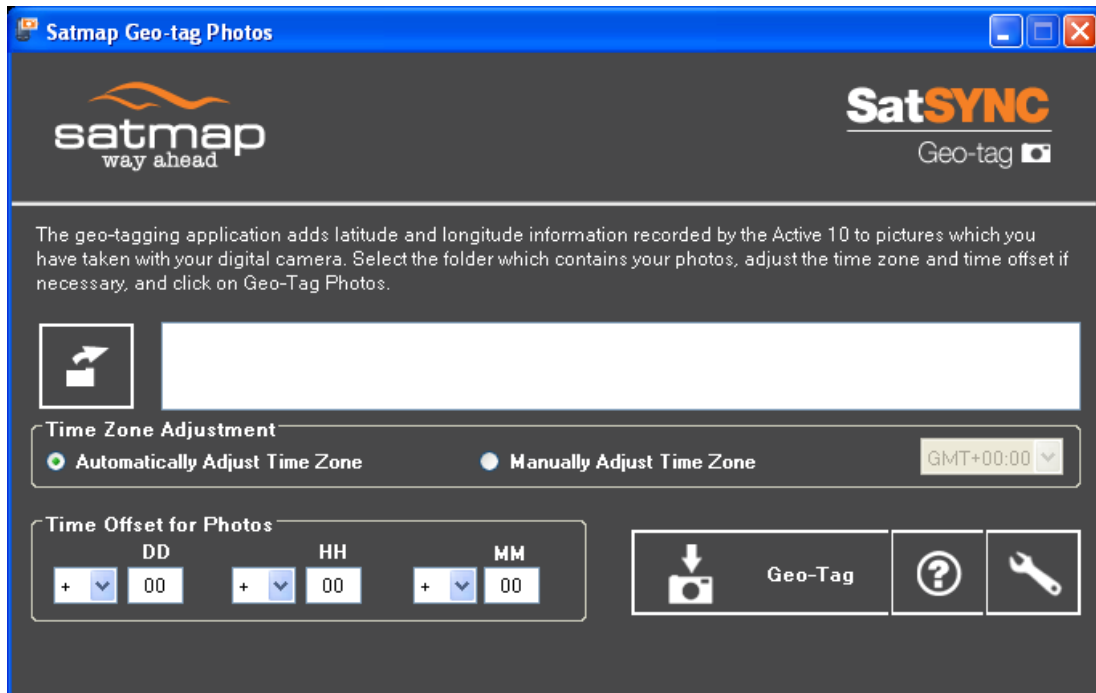




Figure 1: The main window of the Geo-tagging application


4) Click on  to browse for the folder where you uploaded your photos. Select the folder and click on OK.

5) Leave Automatically Adjust Time Zone ticked to allow the computer to adjust the time offset from UTC/GMT (recommended). However if your photos were taken in a different time zone compared to your current zone, then you have to tick Manually Adjust Time Zone to manually select the time offset from UTC/GMT. The value selected should be the same as the Time Offset selected on your Active10 during your walk. For example if you took your walk in Great Britain, during summer months GMT+01:00 should be selected since British Summer Time is one hour ahead of the UTC/GMT; GMT+00:00 should be selected in the winter months.

6) If the time on your digital camera does not match your local time, enter the difference in DD, HH and MM fields. For example, if your local date and time is 2010/11/01 10:00am but your camera date and time is 2010/11/06 8:30am, your photo time should be shifted 5 days behind, 2 hours ahead and 30 minutes behind. Therefore select the minus sign for the DD field and enter 5 in this field, select the plus sign for the HH field and enter 2 in this field and select minus sign for the MM field and enter 30 in this field.

7) Click on  to Geo-Tag your photos. At this point if you have forgotten to copy the Raw GPX file to the photo folder you will get an error message. Otherwise just wait till progress bar completes.

8) Go to the folder containing your photos where you will find two copies of each photo. The copy with the "_gpx" suffix is the geo-tagged photo. The application also by default generates a "GoogleEarth.kmz" file which again can be found in your photo folder. You can change this setting

by clicking  button. Note that by default the height source of your geo-tagged photos are your Raw Gpx files. You can change this option to get the height from the Internet. But for this your computer must be connected to Internet and the geo-tagging process might take longer.

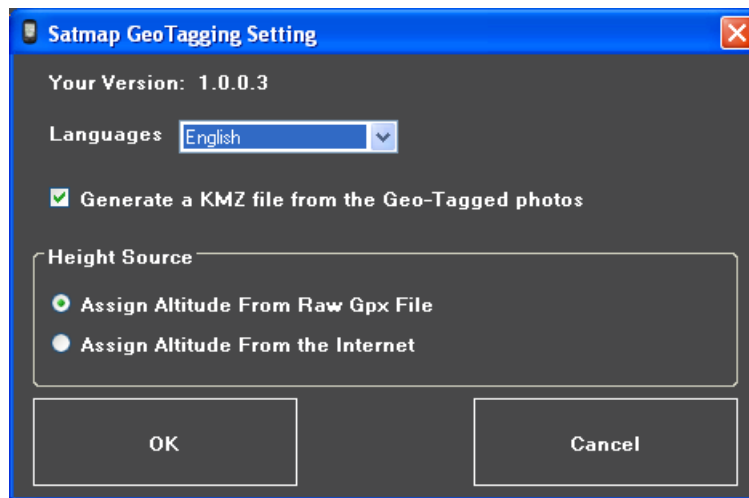


Figure 2: "Satmap GeoTagging Setting" window

9) Congratulations! You have finished geo-tagging your photos. Now enjoy viewing your photos on many applications available on the Internet for free such as Google Earth, Picasa, Panaromio and also on your Active 10.

9-1) Google Earth (earth.google.com)

- a. Download and install Google Earth
- b. Open Google Earth, drag and drop the generated "GoogleEarth.kmz" file to view your photos on the map.

9-2) Picasa (picasa.google.com)

You can use Picasa to generate your own kmz file as follows:

- a. Download and install Picasa
- b. Open Picasa and browser for your geo-tagged photos; each geo-tagged photos has a plus sign on its bottom right hand corner
- c. Select the photos you wish to view in Google Earth
- d. Go to the Tools Menu

- e. Select Geotag
- f. Click on Export to Google Earth File
- g. Give the Google Earth File an appropriate name and click on Save
- h. Click on the small pop-up message “Click here to open file in Google Earth” which appears near the bottom right hand corner of the Picasa window

9-3) Panoramio (www.panoramio.com)

You can upload your geo-tagged photos by signing up for a Panoramio or Google account. Just follow the simple instructions after signing in.

9-4) Active 10

To view your geo-tagged photos on your Active 10 do as follows:

- a. Start SatsYNC and go to File-> Import -> Files from My Computer
- b. Browse to your geo-tagged photos’ folder on your computer and select the photos you would like to view on your unit and then click “Open”
- c. Wait till SatsYNC completes importing the selected photos as “.map” files to your Active 10. Once this is completed your unit beeps.
- d. To view your imported photo on your Active 10 go to Main Menu -> OOI Menu -> OOI Folders -> *select Internal Storage or SD Card*-> *Select the photo* -> Show Details



Figure 3: A Geo-tagged photo on Active 10

- e. To view the location of your imported photos on your Active 10 go to Main Menu-> OOI Menu -> OOI Folders -> *select Internal Storage or SD Card*-> *Select the photo* -> Centre On Map

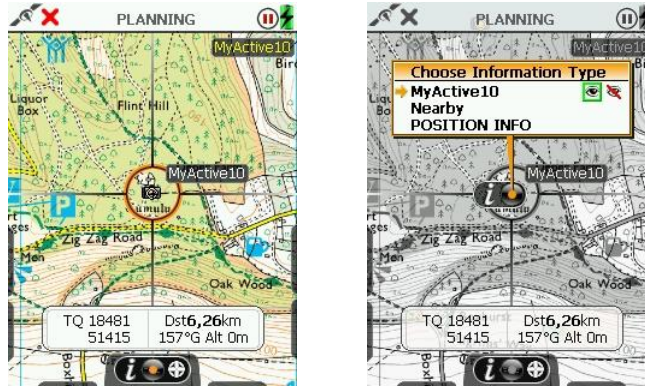


Figure 4: Location of a Geo-tagged photo on Active 10

10) Perform some housekeeping on the Active 10:

- a. Go to the Trip Log
- b. Press the Menu button
- c. Select Reset All & Convert to save your trip data [Make sure you export Raw GPX files and converted tracks to your computer from time to time to keep your Active 10 running smoothly – these files contain the route you took on your trip, so you can view them in [Satmap Xpedition](#) or other mapping tools.]
- d. Select Reset All if you do not wish to save your trip data

Trouble Shooting

Why do I get the message that "Some photos were not geo-tagged as their positions were not found"?

- Check that your camera time is the same as your local time. See step 0 in "After Your Trip".
- You could be in a different time zone compared to the time you took your photos. See step 0 in "After Your Trip".
- You have probably reset your trip data without saving it first. See step 1) in "After Your Trip" for instructions on how save your trip data. Unfortunately, it is no longer possible to geo-tag your photos.