

SatSYNC for Mac

User Guide

Version: 002

Last Updated On: April 1, 2011

Table of Contents

Table of Contents	2
1 Installation Instructions	3
2 Usage.....	6
2.1 MAP Files.....	6
2.2 Copying Files To and From the Device	6
2.3 Deleting Files on the Device.....	7
2.4 Converting GPX & MAP Files	7
2.5 Updating your Active 10 and SatSYNC Software	8

1 Installation Instructions

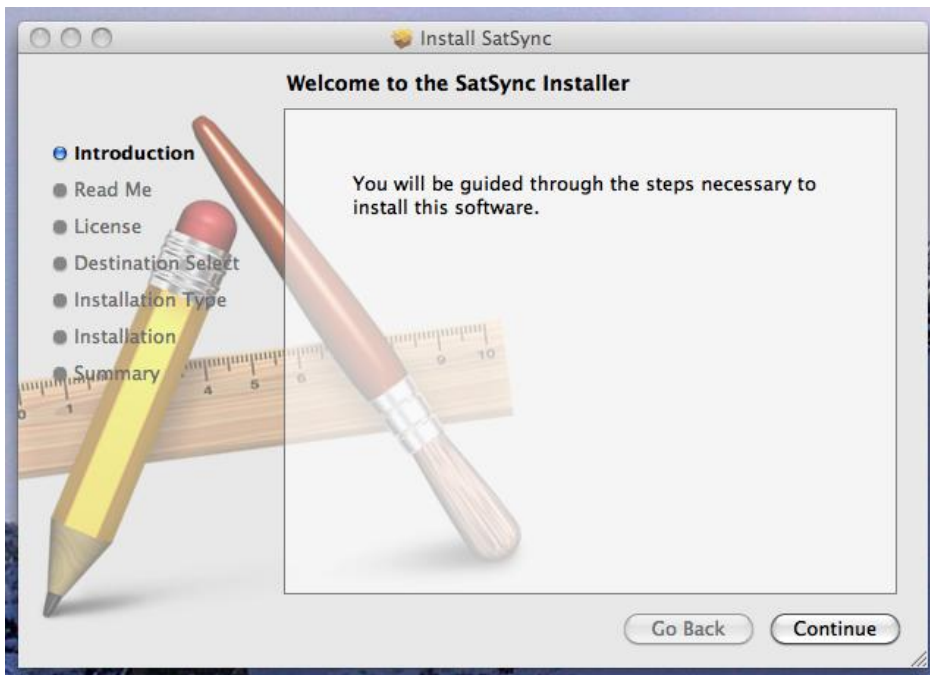
1. Download the following file from the Internet:

<http://satmap.co.uk/updates/SatSync.pkg>

2. Double click SatSync.pkg:



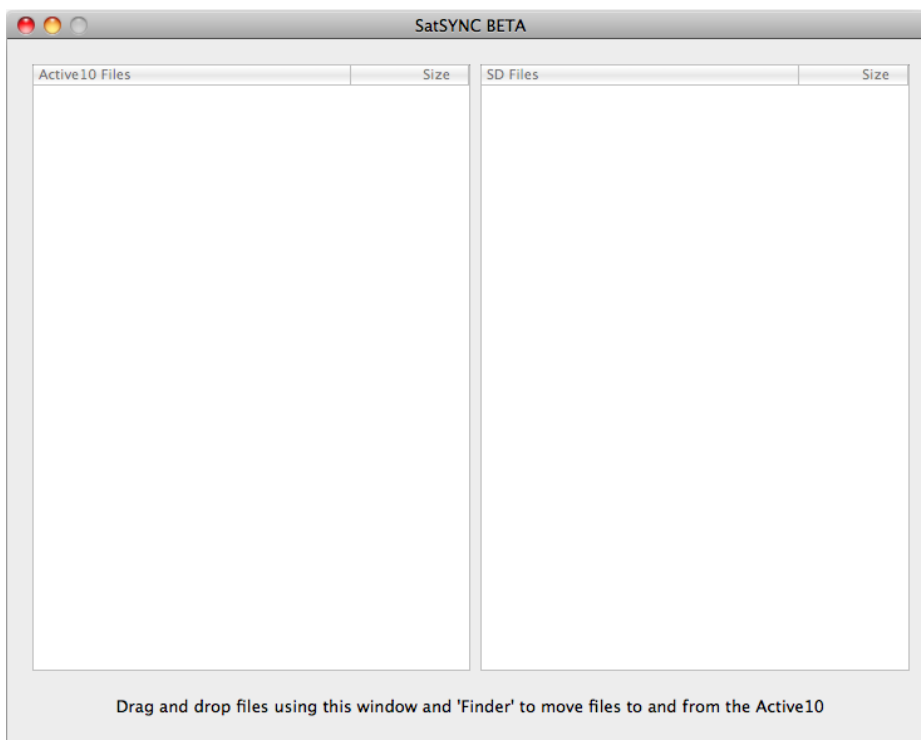
3. Double clicking it should start the installer:



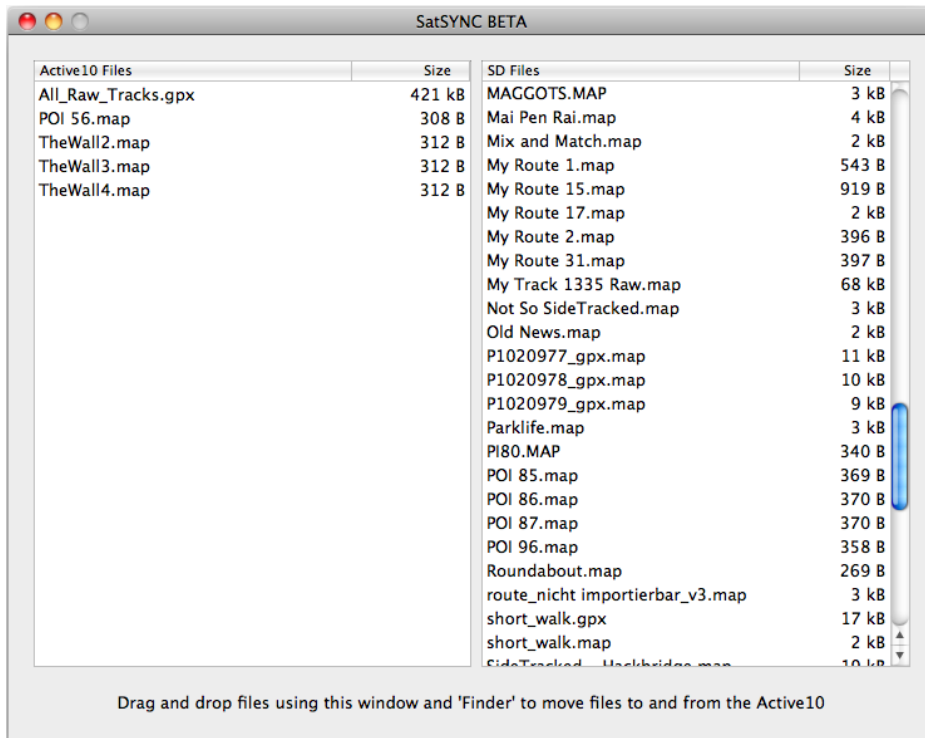
4. Which once installed should leave a program in your Applications directory like this: (in Finder)



5. Double clicking SatSYNC should bring up the application which looks like this:



6. When you connect your color switched on Active 10, SatSYNC shows the files in the Internal Storage and SD Card:



2 Usage

SatSYNC should be used in conjunction with the separate Satmap Mac File Converter to maximize the benefits of the Active 10 Software and third-party applications. SatSYNC's built-in File Converter can only convert GPX routes or tracks to .map files for use on the device; this converter can also only convert MAP routes to GPX routes for use in other mapping applications. However, the separate File Converter can convert the following files formats to MAP files for use on the unit:

- Geocaching.com LOC (POIs)
- Geocaching.com GPX (POIs)
- Geocaching.com Pocket Query ZIP (POIs)
- LOC (POIs)
- GPX (routes and POIs)
- JPG (geo-tagged and non-geo-tagged photos)
- KML/KMZ (routes, AOIs, LOIs and POIs)
- Tab delimited text files (routes, AOIs, IOIs, LOIs, POIs)
- TCX (routes)
- XOL (routes)

You can also use the separate File Converter to convert MAP files representing routes or OOI to the following formats:

- GPX (for viewing routes and POIs in numerous mapping applications)
- KMZ (for viewing routes, AOIs, LOIs or POIs in Google Earth)
- Tab delimited text files (for managing routes, AOIs, IOIs, LOIs or POIs in spreadsheet programs such as MS Excel)

Refer to the File Converter for Mac User Guide for further details on how to use the standalone File Converter. The rest of the sections in this document describe how to SatSYNC and its built-in File Converter.

2.1 MAP Files

A MAP file can be a route, OOI or an actual map. Each route or OOI only occupies a few kilobytes (KB) of storage space whereas maps occupy a few hundred megabytes (MB) to a few gigabytes (GB) of storage space. Routes and OOIs can be placed on the Internal Storage or SD Card. Purchased maps only work from the root of the SD Card, so do not delete or move them elsewhere apart from making backup copies which can be used later on the **same** SD Card; when making backup copies, you need to copy the Licence.map file as well as the large MAP files.

2.2 Copying Files To and From the Device

Select the files you want to copy and drag them to the place where you want to put them.

For example:

- Drag a MAP file to the SD card column from the desktop or Finder
- Drag a MAP file from Internal Storage to the Desktop or Email.
- Drag a route from the SD Card to the Internal Storage

2.3 Deleting Files on the Device

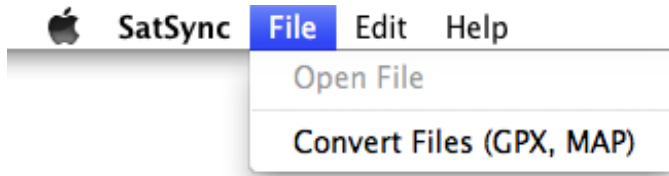
Select the files you want to delete and then right click (or ctrl click) to reveal a delete menu allowing you to delete the file(s).

2.4 Converting GPX & MAP Files

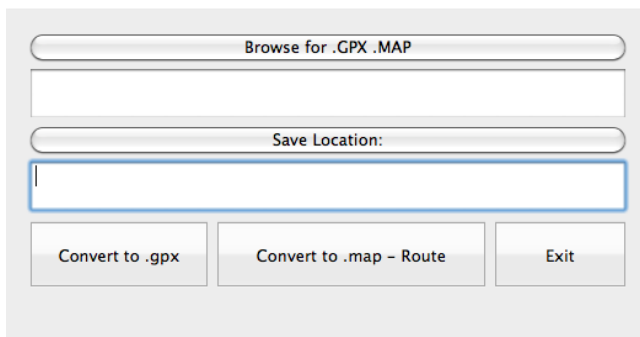
Dragging a GPX file to the device will prompt you to convert it to a MAP file you can use with the Active 10. Please note that the built-in File Converter has limited features as described at the beginning of this chapter. You must use the separate File Converter to maximize the benefits of the Active 10 Software and third-party applications.

If you want to manually convert between MAP files and GPX:

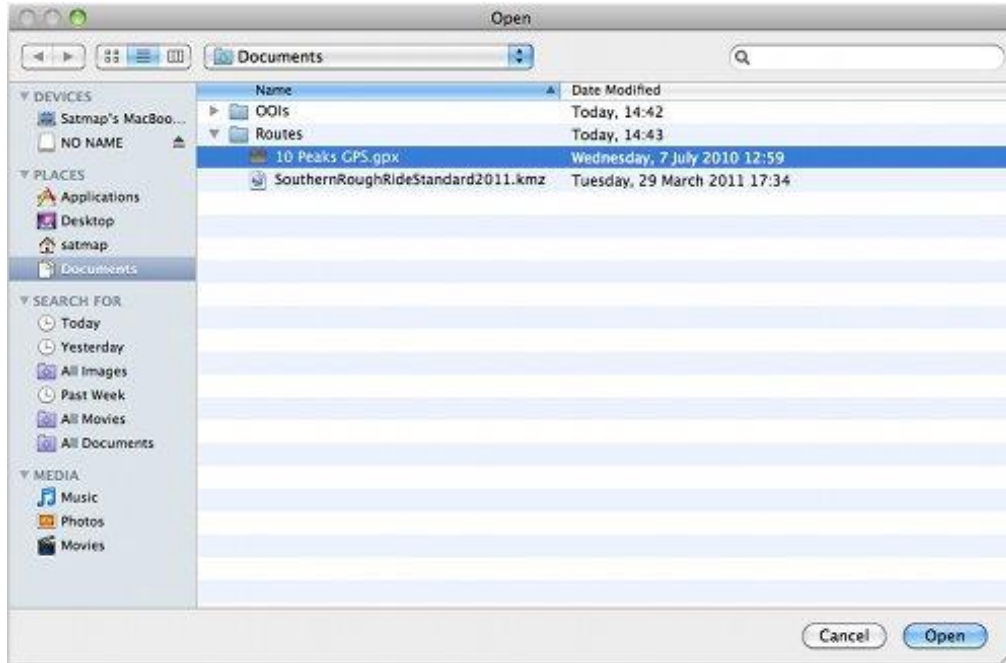
1. Click the 'File' menu:



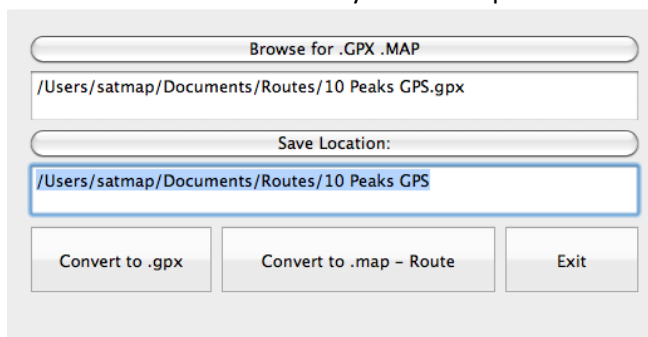
2. Click the 'Convert Files' item – a new sheet will slide out:



3. Click Browse for .GPX .MAP
4. Select the file you wish to convert and click on Open:



- The Save location box shows you the full path of the converted file:

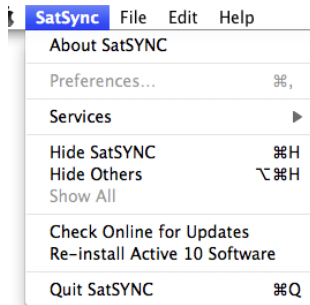


- Click 'Convert to .gpx' if you have selected a MAP file or Click 'Convert to .map - Route' if you have selected a GPX file containing **routes or tracks only**.
- Click 'Exit' when you have finished

2.5 Updating your Active 10 and SatSYNC Software

Ensure you have an Internet connection.

- Click the 'SatSYNC' menu
- Click 'Check Online for Updates'



If there is new software available for your Active 10 or SatSYNC, you will be prompted to upgrade. If your unit ends up in recovery mode after restarting it, do the following:

1. Connect your Active 10 to your Mac via the USB cable
2. Click on the 'SatSYNC' menu
3. Click 'Re-install Active 10 Software'
4. If the error persists, remove the SD Card, free some space on the Internal Storage and try again